



Los Angeles Poverty Department
Presents

Glimpses of Utopia: 8-15

July 26, at 7:30P.M.

RED DOT GALLERY, 500 S. Spring Street, Los Angeles, CA 90013

(southeast corner of 5th and Spring St.)

“Glimpses of Utopia” performance events are part of the Skid Row based theater group, Los Angeles Poverty Department’s, project **UTOPIA/dystopia**. **UTOPIA /dystopia**, seeks to find out how flesh and blood people living and working downtown envision the future of downtown and what kind of downtown they would like to be a part of.

The performance event “Glimpses of Utopia: 8-15” follows our June event “7 Glimpses of Utopia”. These events take the form of a Come Together, a community performance strategy conceived by **UTOPIA/dystopia** collaborating artist and 2006 Alpert Award winning visual artist Harrell Fletcher. (www.harrellfletcher.com; www.learningtoloveyoumore.com/). LAPD’ers and others were asked to identify and invite someone they knew who was doing something laudable, and important, something that represents the best of the current and future downtown. The selectors for this event include participants in **LAPD’s ChangeXchange Summer Workshop** in art and social change (Anja Stroobants from Belgium, Maurice Udom from Nigeria and Malene Nielsen from Denmark).

The presenters are asked to do a 10 minute presentation—in any form they see as appropriate—about what they are doing downtown and how they would like to see the future of downtown evolve. The presentations can be a performance, a demonstration or a lecture. The presentations happen back to back, combining the insight and passion of both selectors and presenters. Taken all together, this presentation becomes a performance event that provides

“Glimpses of Utopia: 8-15”



LAPD’ers and Summer Workshop guests pause and pose before attending a hearing at City Hall.

ABOUT LAPD’s UTOPIA/dystopia

One person’s utopia is another’s dystopia. In the past 40 years, civic policy in Los Angeles has generated the twin towers of utopia and dystopia: Bunker Hill, the redeveloped high rise financial center; and below it, Skid Row. The current real estate boom is generating new social policy, including the possible displacement of the majority population of poor people living in the area.

What is the future vision for downtown Los Angeles? A powerful urban core that will dominate the city in the future is taking shape. But, what shape? Is the desired “new urban lifestyle” an upscale monoculture, or, is the vitality of city life essentially about a dynamic cultural, racial and economic mix?

LAPD’s **UTOPIA/dystopia** will engage long standing and new area residents to inform and broaden the public discourse, and use performance, public art, conversations, and convenings to articulate grassroots visions of the city’s future. Let us know if you want to get involved in any aspect of the project, including performing with us. Contact us at lapovertydept.org or call 213 413-1077.



ChangeXchange, 2007 from top L. to R. Anja Stroobants; Henriette Brouwers; Jennifer Musto; Charles Jackson; Malene Nielsen; Riccarlo Porter; Lorinda Hawkins; John Malpede.



PRESENTER: Don Spivak was appointed Deputy Chief of Operations and Policy for the Community Redevelopment Agency for the City of Los Angeles in October, 2006. He has been responsible for overseeing significant development, redevelopment and revitalization activities in and around the Downtown Core, Hollywood, the East Side and portions of the San Fernando Valley.

Don will talk about Downtown Los Angeles, Recent Trends and Current Growth Issues.

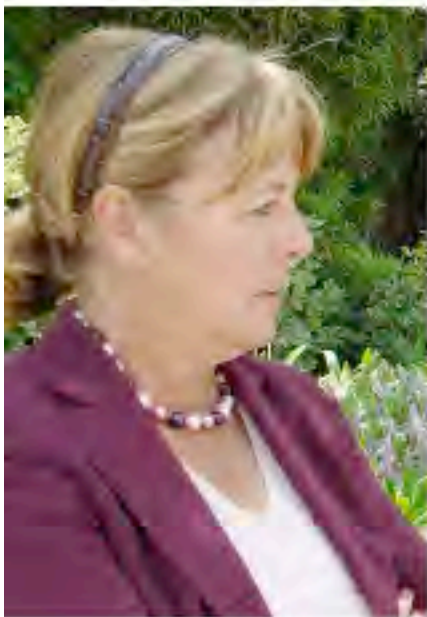
SELECTOR: Rickey C. Mantley has been a long-term activist/organizer and newspaper editor with a number of grassroots organizations. He has been with LAPD since 1999.



PRESENTER: Don Bell has been living downtown for 25 years. He is a street vendor of soft drinks. He sells the cheapest soft drinks you can find on Skid Row and he is presently raising his son as a single father.

"I asked Don to talk about his vision for downtown. Don treats his clients with respect, but feels restricted by the LAPD: they don't respect the little guy. They need to recognize people who are trying to bring something good into the community."

SELECTOR: Tony Parker has played bass since 1972. Opening for top reggae and R&B acts including The Wailers, Ziggy Marley and the Ohio Players. Tony has recorded with the late great Joe Higgs, mentor of Bob Marley, on the album "Family" and Matuzalem on "Nation Rise". He has been a member of LAPD since 1992.



PRESENTER: Rosemary Anaya is currently the Director of Economic Development and Community Outreach in the Office of the Los Angeles City Attorney. Recently she held the position of Vice President & Chief Operating Officer of the Downtown Center Business Improvement District (DCBID) and Central City Association of Los Angeles, Inc (CCA).

Rose will speak about her vision for downtown LA from the perspective of someone who has worked with both business and community organizations.

SELECTOR: After using illegal drugs for over 40 years, Kevin Michael Key, known as "Kevin Michael" in the rooms of recovery, has been a clean and sober member of the Skid Row community for the last 5 years.



PRESENTER: LAPD Detective Eric Moore. Detective Moore is assigned to the Detective Support and Vice Division Community Problems Unit. His unit is designed to resolve ongoing nuisance/crime issues at locations where traditional means of enforcement have not fixed the problem.

Eric Moore will be talking about his work and the "CHAMP" program, how this is changing the city.

SELECTORS: Sashae Siatui Zackery (top) Sashae is trained as a nurse at UCLA, lives on Skid Row and has been a member of LA Poverty Department since 2003.

Malene Nielsen (bottom) is an activist, artist and organizer living and working in Copenhagen. Her work spans visual art, video, sound art, curating, writing and performing.





PRESENTER: Mystic Pete (Peter Ludwig), cellist, vocalist, producer and meditation teacher, has had an unconventional musical career. He started playing cello in 3rd grade when his school offered lessons for \$6 per year. His vocal work began when he was training to be a medium and started chanting in other-worldly voices. Eventually he quit mediumship. The voices, however, stayed.

Mystic Pete will play one of his own compositions: music for meditation, yoga, massage, relaxation and sensual union.

SELECTOR: Julie Rico manages both Red Dot Gallery & Bistro and Weenez located on 500 S. Spring. She opened these two adjoined venues in 2006 and resides in the Security Lofts; where she has lived for one and a half years.



PRESENTER: Dr. Dennis Bleakley of the JWCH Clinic at the Weingart Center has seen a great deal in his years as a practitioner of the healing arts on Skid Row. He feels that if he prevents one person from suffering the ravages of tuberculosis, high-blood pressure and other diet-related and contagious diseases then his years of service will not be in vain.

Dr. Bleakley will talk about his work on Skid Row and how he envisions better medical care for community residents.

SELECTOR: Anja Stroobants works in Brussels for the KVS/ The Royal Flemish Theatre which cooperates with the different communities in the city. Her function is to deal with young people and those that are socially vulnerable.



PRESENTER: Mrs. Maria (Lupe) Obay, owns and operates Perez Hairstyling located at 137 East E 3rd Street between Los Angeles Street and Main Street. Since 1991 her shop was formerly at the Frontier Hotel. She was forced to move in 2007.

Lupe will be speaking about how gentrification has impacted herself and her business in the community.

SELECTOR: Maurice Udom, a Ph.D Linguist, Uniuyo, AKS-Nigeria. He is currently on a worldwide campaign against all forms of injustice. He is a playwright, actor, novelist; and a lecturer, Akwapoly, Ikot Osurua, AKS, Nigeria. For more info: mauriceobong@yahoo.co.uk



PRESENTER: Becky Dennison is a member and co-director of the Los Angeles Community Action Network (LA CAN)—an organization building power among low-income residents of downtown to demand equity and justice. LA CAN is also a member of the Downtown Women's Action Coalition which works to improve conditions for women living downtown and ending violence against women.

Becky will discuss LA CAN's views and principles for the revitalization of downtown LA.

SELECTOR: Pete White founded Los Angeles Community Action Network (LA CAN) in 1999 and has not deviated from "speaking truth to power" while confronting and contesting those forces who are at odds with this community's best interests.



About THE RED DOT GALLERY

"Hot Dogs and how they can save the ART!" by Julie Rico

Sid and I were living in D.C. when we talked about how we might help support the art community. The gallery system that I had worked in did not work. The films that Sid worked on did not seem to work out financially either. We both put huge efforts into the support of the art community. But our contributions were limited due to financial restraint.

After visiting the famous Bens Chili Bowl in Washington D.C. and enjoying the casual attitude and very long lines we started thinking about hot dogs. We then started to research. I would go everyday to the Portland Library while living there and researched hot dogs. I found the most amazing information on hot dogs.

Just looking at the hot dog history in the United States was also a revelation that hot dogs are serious business here in the United States. Maybe hot dogs could really support the art community?

So Sid and I set out to develop a business model that would incorporate a hot dog restaurant with an art gallery. With the revenue from the sales of hot dogs we could support the artists with increased attendance, marketing opportunities not offered in normal gallery settings. And we could create the best hot dog restaurant in the world in which we could all enjoy.

When we moved back to Los Angeles we began searching for a location. Through the help of a number of people we discovered our new location in downtown Los Angeles. Here will sell hot dogs, chili and tamales in the Weeneez area. You can also enjoy seafood appetizers, soups, delicious gourmet coffee drinks, beer and wine in the Red Dot area.

About The Los Angeles Poverty Department

LAPD's mission is to create performance work that connects lived experience to the social forces that shape the lives and communities of people living in poverty. The Poverty Department is committed to creating high-quality, challenging performance works that express the realities, hopes and dreams of people who live and work on Los Angeles' Skid Row. LAPD is dedicated to building community and to the artistic and personal development of its members. Since 1985 LAPD has offered performance workshops that are free and open to the Skid Row community. The workshops take place at a variety of sites, with the in-kind support of a variety of community partners which have/do include: SRO Housing Corporation, St. Vincent's Cardinal Manning Center, Inner-City Law Center, United Coalition East Prevention Project and LA Community Action Network.

"The Los Angeles Poverty Department, (is) a truly unique part of the Southern California theater scene."

—James Taylor, Theater Talk, KCRW-FM

"The Los Angeles Poverty Department has become one of the country's most outspoken and profound Theater troupes."

—Natalie Haddad, REAL DETROIT

"The Los Angeles Poverty Department, despite the homeless status of many of its members, has thrived for years from its downtown outpost and continues to offer theater that's often stunning in its honesty and lacking in pretension."

—C. Monaghan, LA Weekly

LAPD's UTOPIA/dystopia project is supported, in part, by: The LA County Arts Commission; The City of Los Angeles Department of Cultural Affairs; The National Endowment for the Arts, Theater; the California Arts Council's Creating Public Value program; The MAP Fund, a program of Creative Capital, supported by the Rockefeller Foundation; Animating Democracy, a program of Americans for the Arts Institute for Community Development and the Arts. LAPD also receives support from The Nathan Cumming Foundation.

Editor, Rickey C. Mantley
Layout and Design, Therese Ritchie, Rickey C. Mantley
Photos, Henriette Brouwers



NATIONAL
ENDOWMENT
FOR THE ARTS

